

Wonthaggi Primary School 3650

2008 Annual Report to the School Community



School Overview



Context

Wonthaggi Primary School is located in the town of Wonthaggi, a growing population of around 9000, which is a service centre for the surrounding rural areas. The township of Wonthaggi is slowly increasing in population due to the number of 'sea changers' coming in to the area, so we anticipate that our enrolments will slowly increase over the next few years.

Facilities

Wonthaggi Primary School was established in 1911 to serve a coal mining community. The school consists of:

- * A red brick Junior School building that incorporates classrooms, administration and internal quadrangle;
- * A weatherboard Senior School building with internal quadrangle built in 1923;
- * A brick library;
- * A refurbished outdoor pool and change rooms;
- * A full size gymnasium;
- * A canteen;
- * And outdoor sporting courts and playgrounds.



Our School Community

Our school is recognised in the community as having a very caring, family atmosphere where parents are welcomed and encouraged to participate in their children's education. The learning environment is positive, safe, attractive and caring.

The school maintains its share of enrolments, marketing its positive features. Wonthaggi Primary School is regarded highly by the local community as a safe and secure school for students which has excellent academic, sporting, student welfare and outdoor education programs.

The school offers parents opportunities to improve understanding of our programs through information evenings, the Parents as Reading Tutors course, and guest speakers. The school believes in an open door style of communication, where parents

feel that their opinions and concerns will receive the attention they deserve.

Mission Statement

Our mission is to be a highly effective school in the Wonthaggi community.

Our school motto "Wonthaggi State is Great" is reflected in a strong sense of ownership by its community. Wonthaggi Primary School aims to nurture responsible, confident and caring students who have a healthy self-esteem, self discipline and respect for others and their property, whilst contributing positively to society. Wonthaggi Primary School aims to develop students who are well rounded and take pride in themselves, their achievement and our school. To achieve these aims, Wonthaggi Primary School will continue to provide a happy, safe, friendly and stimulating learning and physical environment, where students are able to enjoy this part of their educational journey. Our school is open to its community and information is easily accessible. It is a place where people feel comfortable and welcome.

Values

At Wonthaggi Primary School:

- We value a warm and caring environment where students develop to the best of their potential academically, socially, physically and emotionally.
- We value each student and encourage them to develop their confidence, self-esteem and a belief in their own ability to learn.
- We value parent and community involvement in our school.
- We value students becoming lifelong learners.

School Goals

Student Learning: To improve student learning outcomes of all students in Grades Prep to Year 6.

Student Engagement and Wellbeing: To improve the engagement of students in their learning, particularly for students in Years 3-6.

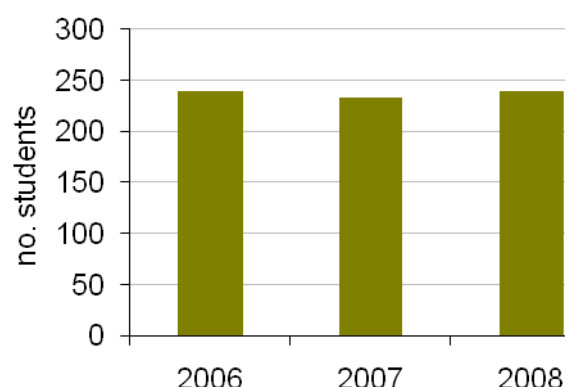
Student Pathways and Transition: To improve the transition for students as they enter the school and move between Prep and Year 6.

Through all of this our mission is to be a highly effective school in the Wonthaggi community.

Student Enrolments

Our enrolments have remained fairly consistent over the past three years and we expect enrolments to increase as the population of Wonthaggi and surrounding districts increase. This is also being assisted by the commencement of the Kindergarten on our school site from the start of Term 4 (2008), with a 2009 Prep enrolment of 39 students enabling us to have two straight Prep classes.

Total students enrolled in school



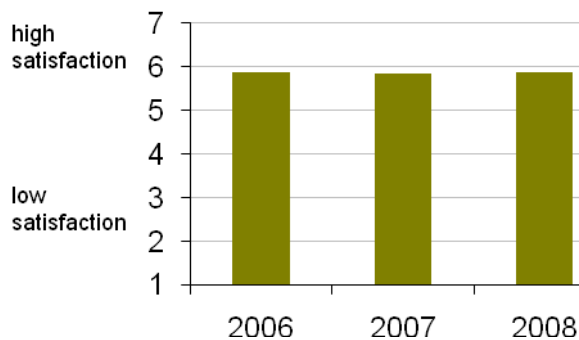
Parent Satisfaction

Our parents are an important part of our school community and this is evident through the support and participation in a full range of our school life. The more we can develop the home-school link, the more we can help support the learning of our students.

The results of our Parent Opinion Survey for 2008 show a continued increase in results across the board. All areas continue to be consistently at or above the State mean, with extra curricula being well ahead of the State mean. The area for improvement is Homework and this has been a focus during the last part of 2008 and early 2009.



Parents' satisfaction with this school (average score on scale of 1 to 7, where 7 is best possible score)



Teacher Satisfaction

There has been a steady increase in results overall during the past three

years, especially in the broad categories of Engagement, Learning and Student Outcomes.

The two areas that have scored highest are the high level of Student Decision-Making (in the top 10% of schools State-wide) and the positive level of Student Classroom Behaviour (in the top 25% of schools State-wide), with both results being well above the State Average.

During 2008, we have continued to develop and refine systems for whole-school improvement, which include distributed leadership (e.g. Team Leaders taking the professional reviews of their team members), feedback systems (e.g. Principal Meetings, Giving & Receiving Feedback) and communication systems (Friday Focus).

During 2008 our staff have consolidated its achievements from 2007, where we achieved Level 4 accreditation in the Performance and Development Culture program (in the areas of staff induction, feedback, professional plans, professional development and belief in a Performance and Development Culture).

Teacher Retention

Generally the staffing profile of Wonthaggi Primary School has been weighted towards Experienced Teachers. At the end of 2008 we had three ongoing teaching staff retire. Our staff retention rate for the 2007-2008 period was 84% (16 out of 19 teachers), the same as the state average.

For the 2007-2008 period we had 83% (10 out of 12) of our ongoing staff retained, with the state average being 88%.

Professional Learning

A key aspect to the success of Wonthaggi Primary School is the capacity building of our staff. We believe that the more we can enhance and develop this knowledge and skill the more informed and prepared our staff will be to enhance instructional practice in the classroom.

During 2008, a greater focus was placed on our staff developing knowledge and skill through Professional Learning based around classroom teaching and learning practice. The greatest single impact on how effectively a student learns is the effectiveness of the classroom teacher. Research has proven that the closer professional learning is to the classroom, the greater long-term impact it is likely to have. Based on this, the main thrust for our Professional Learning has been our Literacy Initiative, with a structured coaching and Professional Learning Program (Professional Learning Teams, Staff Meetings, Leadership Meetings, Learning Walks, fish bowling and shadowing) being implemented. This Professional Learning Program has taken place within the broader framework of our Strategic Plan and Annual Implementation Plan.

During 2008, I had the opportunity to complete a study tour of schools and school districts in the USA that are developing instructional practice through opening up the classroom. The knowledge gained from this study tour has been instrumental in refining change within Wonthaggi Primary School.

Our teaching staff should be proud of the knowledge, skill and positive learning culture that have been created over the past three years, so much so

that we have had school tours by Gippsland Regional Network Leaders, groups of Gippsland Principals and teachers. The focus of these tours has been looking at the way we have developed our staff learning culture through observing teaching practice and learning from colleagues.

Teacher Qualifications

All teachers in Wonthaggi Primary School are registered with the Victorian Institute of Teaching. The requirements for registration with the Victorian Institute of Teaching can be found at; http://www.vit.vic.edu.au/content.asp?Document_ID=241.



Our instrumental performers at a Friday morning Assembly.

Principal's Report

This year has been a very busy and productive year at Wonthaggi Primary School. The many achievements and milestones have been due to the dedication and hard work of our wonderful staff, who continually put in effort to ensure our school is pursuing excellence. The contribution and achievements of our School Council and the sub-committees has continued to be significant.

Our 40 Grade 6 students have played a very active and important part in our school year and we wish these students all the best with Year 7 and beyond. Young people certainly do have many opportunities and alternatives and it is our mission at Wonthaggi Primary School to help students develop to the point where their options of jobs and careers are plentiful.



Year 6 Camp at Wilson's Prom.

We have continued the progressive improvement of our facilities through external contractors and School Council initiated Working Bees.

2008 has seen the final stages of planning, the building and the opening of the Wonthaggi Kindergarten on-site at Wonthaggi Primary School. This has been a great achievement accomplished through a co-operation

between Wonthaggi Primary School, Bass Coast Shire Council, Wonthaggi Kindergartens and the Department of Education and Early Childhood Development.



Minister for Children & Early Childhood Development Mrs Maxine Morand with our Prep students

We have now finished our second year as part of the Gippsland Literacy Improvement Strategy. This has further developed our great literacy results, with our Year 3 & 5 NAPLAN testing results showing consistent improvement. We are determined to ensure we set ourselves up for success by building the capacity of our teachers through the implementation of effective systems as we move towards a more self-sustaining model in 2010.

During the last three years Wonthaggi Primary School has been implementing a transition period, where we have been developing the knowledge, skill and leadership of staff in preparation for the retirement of some of our more experienced staff. We have been very keen to ensure that our continued growth as a school is not hampered by change-over of staff.

As we turn towards next year we look forward with much anticipation as we continue to develop our school towards excellence.

Wes Holloway
PRINCIPAL

School Council President's Report

Wonthaggi State is Great!

It's a simple motto for a school that achieves so much and continues to develop each and every year. In my sixth year on council, (Four as Treasurer and this last year as President) Wonthaggi Primary School grows from strength to strength.

We thank our dedicated staff, parents and volunteers for their assistance in the running of our wonderful school. We also thank the children for their contributions over the year.

The highlights for the 2008 school year are many, so I will share some of them with you.

- Opening of the Wonthaggi Kindergarten in October 2008
- The great school camping programs
- Junior school excursion to Dandenong and two farms
- Breakfast program
- Water tanks installed around the school
- Clean up of school grounds
- Gardening club
- Training for school council members
- Swimming programs
- Beach Days
- Twilight house athletics
- House swimming sports
- University of NSW competitions
- Netball/Football carnival
- District athletics at Newhaven
- Chess championships at Wonthaggi Primary
- P & F for running the School Disco's and a range of stalls for Mothers/Fathers day etc.
- Christmas sing along
- Basketball championship
- Bike safety program
- Spell a thon
- Music tuition program
- Annual school picnic
- Cross country
- SRC talent quest
- Life Ed van
- Artist in Residence Week and concert with Bernard
- Visit by the Western Bulldogs players including Jason Akermanis
- Active After School Program

Congratulations to our After School Care Service on their recent accreditation.

Now in its fifth year this service continues to grow for the benefit of our school community. Well done to After School Care co-ordinator Belinda Allen and assistant Sandra Stegman on their work.

Thank you to each of the school councillors and staff for their efforts and contributions to the school over the year and in particular their support to myself over the past six months due to my ill health.

We look forward to the Centenary of Wonthaggi next year and the continuing growth of our school. A school we can be all proud to be a part of.

Steve Marston

SCHOOL COUNCIL PRESIDENT



Student Progress & Achievements

Student Learning

Overall our students have achieved very good results through both NAPLAN testing and teacher assessed standards. We have introduced a number of strategies during 2008 that are having a positive impact.

- We are in our second year of implementation of the Gippsland Literacy Improvement Strategy.
- We have opened up teacher practice where teachers have been able to learn from each other through learning walks, coaching, shadowing and fish bowling.
- Our Teams have been working closely together to build greater consistency and continuity.
- We have implemented an adjusted Reading Recovery program and a Reading Assistance Program for our Grade 1 students. These programs are helping to add value to our teaching and lift students from a relatively low entry level.
- Class teachers have developed an outline the Victorian Essential Learning Standards (English and Maths) for students in their class, showing where each student is now and where they aim the student to be by the end of the year.

Our students are making consistent progress in reading, writing, spelling and number, and overall we have been able to facilitate student growth at a greater than expected level. Our Year 3 results have improved, however are

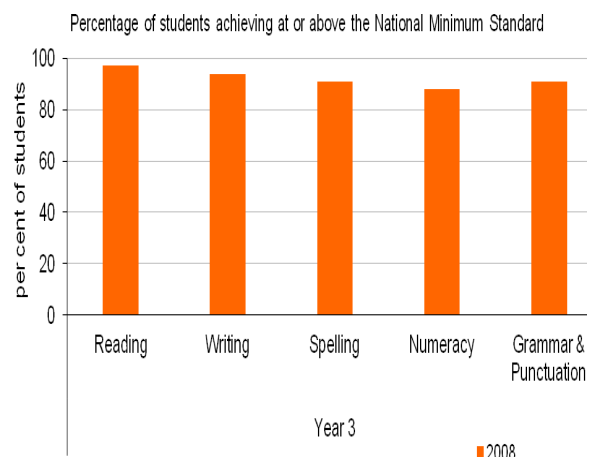
still under the State average. Our Year 5 results are consistently above the State average.

During 2008 we resourced additional staff in the Year 3 level, which has shown some benefit. We have implemented a whole school spelling program, which includes Jolly Phonics at the Prep level and SRA Spelling from Years 1 to 6. We expect the results of this to be evident in 2009.

Our lowest area in both Year 3 & 5 is Numeracy and this will form part of our 2009 focus on Maths.

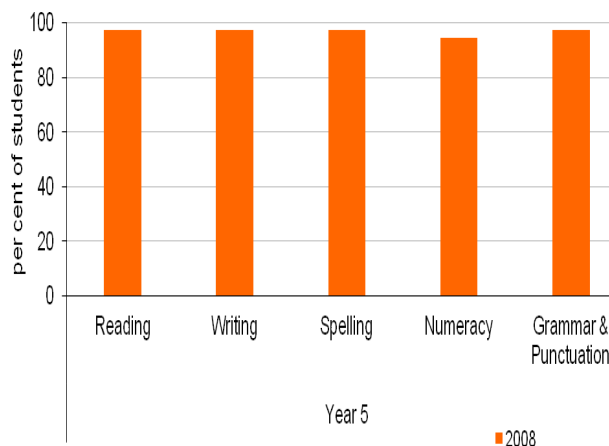
Percentage of students achieving at or above expected standards

The following results outline the percentage of Year 3 students who, according to their NAPLAN results, are achieving above the National Benchmark level. The results of our GLIS reading and writing programs are starting to come through and this is a credit to the teachers who have been working very hard in these areas. These results have flowed over to grammar and punctuation as well.



Percentage of students achieving at or above National Benchmarks

The following results show the percentage of Year 5 students, according to their NAPLAN results, were almost all above the National Benchmark for reading, writing, spelling, numeracy, grammar and punctuation. This level is consistently higher than 95% of students. This is a very good result and one which we should be proud of.



Student Pathways and Transitions

There are three main transitions that we have been concentrating on at Wonthaggi Primary School: Grade 1/2 to 3/4, Kinder to Prep and Grade 6 to Year 7.

1. Kinder to Prep Transition

We have been working with the local Kindergartens to build a closer working relationship. During Semester 2 we had the opening of the Kindergarten and participated in a number of joint events (e.g. joint Assembly & Staff Meeting).



Kindergarten Opening musical item by our Grade Prep students.

2. Grade 1/2 to Grade 3/4 Transition

This has been an area that we have been working towards with more endeavour. There are two significant aspects to this transition – the change in focus from reading fluency to reading comprehension and the physical change of students from the Junior Quadrangle to the Senior Quadrangle. A smooth transition is important because of the need for consistency and continuity for students and parents. We are initiating a range of strategies to develop these areas including:

- Developing the use of joint Team Meetings between Junior, Middle and Senior Teams.
- Curriculum Drivers develop greater continuity in programs with the transition from reading fluency to comprehension by Term 2.
- Further development of GLIS reading and writing in the Year 1/2 classes during Semester 2.

3. Grade 6 to Year 7 Transition

Our transition program has carried on, with our Grade 5/6 teachers leading. This program consists of a number of days through the year and the feedback that we have received is that our students go to the Secondary College prepared for the next stage of their schooling.

At this stage we do not have a lot of contact at all with Newhaven College. Unfortunately in the past the communication has been one dimensional and we are looking forward to a time in the future when this relationship will change.

Student Engagement and Wellbeing

Student Connectedness

At Wonthaggi Primary School we have continued to put a lot of work into student engagement and wellbeing. A range of activities have been put in place to ensure that our students are engaged and motivated. These activities have included:

- Student Representative Council
- Lunchtime clubs (e.g. chess, guitar, art, computer and tinkering)
- Special activity groups (e.g. Girls' Rag Doll Group, Working Together & Kids Carpentry)
- Active After School sporting activities (two nights per week)
- Water Safety Days, Beach Days and our swimming program
- Special Events and community based programs (twilight athletics, special performances, chess competitions, Family Science Nights)
- Music tuition program
- Sporting program
- Peer Mediators

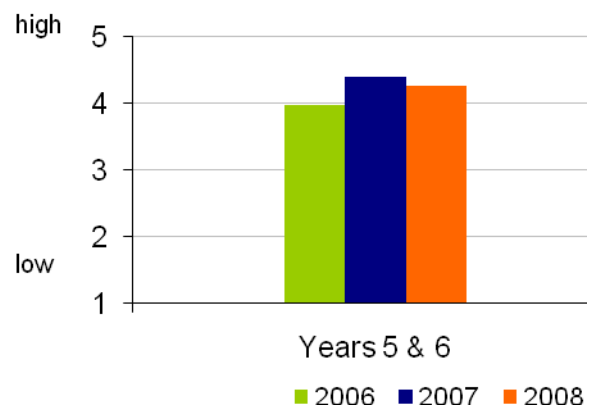
The results of our Attitudes to School Survey show consistently good results in all areas. Our strong improvement has continued in the areas of teacher effectiveness, teacher empowerment, stimulating learning and classroom behaviour. We were in the top 50 percentile range (when compared to

other schools in Victoria) in almost all of the categories.

In addition to this quite a bit of work has been completed on developing positive relationships with students. While quite a bit of work has been put into developing adjusted and new units of work, we need to update our Scope & Sequence Chart and common links between the three teams (Junior, Middle and Senior). Further work will also be done on developing our curriculum during 2009. We have made quite a bit of progress with our facilities, however more work needs to be completed on some facilities for students in our school yard.

The following graph shows consistently good results between 2006 and 2008 in student connectedness to school with our Year 5 and 6 students.

Student connectedness to school
(average score on scale of 1 to 5, where 5 is best possible score)



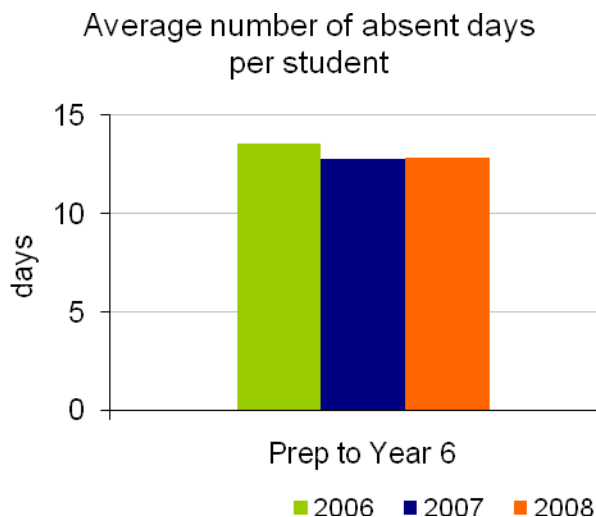
While our overall results are very good, our data shows that our Year 5 boys and Year 6 girls are slightly behind. During 2009 we need to ensure that we address these results.

Again we need to congratulate our dedicated and hard working staff for all of their hard work and dedication.

Student Absenteeism

We have achieved steady results in the number of days our students have been absent from school, with our results being very similar to 2007. We need to continue to follow this through and push the 'It's Not Okay To Be Away' message.

We also need to continue to decrease the student un-notified absences and follow these up (classroom teacher, office, Assistant Principal and/or Principal).



Future Directions

It is very important that we continue to develop and refine what we do and how we do it at Wonthaggi Primary School. To help us achieve this in 2009 we will:

Student Learning - Literacy

- Have combined Team Meetings that facilitate the sharing of teaching strategies, data and initiatives.
- The development of greater continuity and sequential development between Grades 1/2 and 3/4.

- Improved teaching of literacy is extended through the school in the areas of reading and writing.
- Continued support through Reading Assistance Program and Reading Support Program at the Grade 1 level.
- Whole school Assessment Schedule implemented and student results transferred to XL spreadsheets.
- Continue with our whole school approach to spelling.
- Further develop our assessment to inform our curriculum development.

Student Learning - Numeracy

- Develop our Maths Curriculum and teaching through maths coaching in the South Gippsland Maths Initiative.
- Initiate a Maths focussed Curriculum Leader.
- Develop greater degrees of consistency in maths programs and teaching.

Transitions

- During last part of 2009 develop a Prep, Junior, Middle & Senior information booklets for parents which outlines expectations and procedures.
- Develop joint activities with our local Kindergarten, which will be on-site.
- Ensure new students to our school all receive an Information Booklet when they arrive at our school.
- Follow-through on an evaluation of our Induction Program.

Teacher Development

- Further refine our Teacher Development Plans as working relevant documents.

- Develop the structure of our Professional Learning Team meetings.
- Have all staff involved in our GLIS PD program

Parent & Community Development

- Continue to develop our community relationships through a range of special events.
- Continue to develop our student portfolios during Terms 1 and 3.

Financial Performance

Overall our financial performance has been steady over the 2008 period. We have received a number of external grants which included Free Fruit days (Department of Education & Early Childhood Development), Minor Works Grants (Department of Education & Early Childhood Development), Information & Computer Technology grants, gardening grant (local government) and School Focused Youth Service (girls' and boys' activity groups).

We have had the final payout of the Innovation & Excellence money to neighbouring schools, with this program coming to an end.

Overall our staff budget areas have been used responsibly. Our school continued the development of our facilities with our own funds. Our Buildings & Grounds and Urgent Works budgets have been almost 4 times the budgeted amount due to the maintenance issues of our old buildings.

Up until the end of 2008 our staff wage profile has been towards the top end, this will change in 2009 due to retirements. This will allow is to roll

some funds over into our cash account. During 2009 we are looking at a range of external funding (State, Federal & community) to complete some maintenance on our buildings and therefore reduce the burden of our maintenance budgets. Also working bees will be utilised to help reduce the amount being paid to maintenance workers.

Financial Performance for the year ending 31st December, 2008	
Revenue	2007 Actual
DE&T Grants	198,027
Commonwealth Government Grants	81,741
State Government Grants	1,449
Other	14,886
Locally Raised Funds	107,399
Total Operating Revenue	403,503
Expenditure	
Salaries and Allowances	130,184
Bank Charges	32
Consumables	39,908
Books and Publications	11,687
Communication Costs	8,520
Furniture and Equipment	30,885
Utilities	9,298
Property Services	143,920
Travel and Subsistence	0
Motor Vehicle Expenses	0
Administration	6,796
Health and Personal Development	668
Professional Development	6,747
Trading and Fundraising	46,343
Support/Service	14,503
Miscellaneous	44,269
Total Operating Expenditure	493,762
Net Operating Surplus/- Deficit	-90,260
Capital Expenditure (Cases 21 Finance Only)	9,100
Please note that the above amounts do not include any credit revenue or expenditure allocated or spent by the school through its Student Resource Package	

School Contact Information

Address:	Billson Street, Wonthaggi Vic 3995
Principal:	Wes Holloway
School Council President:	Steve Marston
Telephone:	(03) 5672 1600
Email:	Holloway.wesley.g@edumail.vic.gov.au
Web site:	http://www.wonthaggips.vic.edu.au/

This report contains summary data extracted from the School Level Report. If you would like to access the School Level Report, please contact our Principal, Wes Holloway.